



Kiinteistö Oy Espoon Jousenkaari 7

Rescue Plan



Kiinteistö Oy Espoon Jousenkaari 7 rescue plan

Completed Feb 21, 2014

Author Pelsu Asiantuntijat

Last updated Apr 6, 2022

Updater Caverion Kiinteistöhelp

This rescue plan was made using the Pelsu Rescue Plan service.

This rescue plan has 29 pages.

Contents

1	Introduction	5
2	Basic property information	7
2.1	Basic information	7
2.2	Organisation	7
2.3	Other information	7
3	Vastuunjako	10
4	Important phone numbers	11
4.1	Important numbers of the property	11
4.2	Other important numbers	11
5	Vaaratilanteet ja niiden vaikutukset	12
6	Safety procedures	13
6.1	Safety equipment	13
6.2	Fire safety	14
7	Other arrangements	15
7.1	Lift	15
7.2	Waste disposal	15
8	Action guidelines	16
8.1	Alerting help	16
8.2	Sudden illness or accident	17
8.3	Fire	17
8.4	Tulipalo - toimintaohjeet, kun turvallinen poistuminen on estynyt	18
8.5	Action in the gathering area	19
8.6	Assisting people with reduced mobility in emergency situations	20
8.7	Water damage	20
8.8	Under threat of violence	20
8.9	Public warning signal	21
8.10	Gas hazard	22
8.11	Radiation hazard	22
8.12	Blackouts	23
9	Civil defence	24
9.1	Civil defence shelter maintenance	25
9.2	Renovating the civil defence shelter	25
10	Säilyttäminen	26

11	Attachments	26
	Appendix A How to use a small fire extinguisher	27
	A.1 Extinguishers	27
	A.2 Extinguishing blankets	27
	Appendix B Car heating cables	28
	Appendix C Home storage supplies	29

1 Introduction

The drafting, upkeep and communication of the rescue plan are based on the requirement of the Rescue Act (379/2011). In this rescue plan, there is an account:

1. for the conclusions of the assessment of hazards and risks;
2. for the safety arrangements of the building and the premises used in the operations;
3. regarding the instructions to be given to people for the prevention of accidents and acting in accident and danger situations;
4. other possible actions for independent preparation at the location. (Rescue Act 379/2011, Section 15))

The rescue plan must be kept up to date and it must be communicated in the necessary way to the persons in the relevant building or other site. (Government Decree on Rescue Action 407/2011, Section 2.)

There are also other requirements for safety in the Rescue Act; the most important of these are: The owner and holder of the building and the operator must, for their part take care that the building, structure and its surroundings are kept in such condition that:

1. the risk of the starting, intentional starting and spreading of a fire is slight;
2. the people in the building can vacate the building in the event of fire or other sudden danger situation or they can be rescued in another way;
3. rescue operations are possible in the event of fire or another accident;
4. the safety of rescue personnel has been taken into account. (Rescue Act 379/2011, Section 9))

The following equipment and devices must be kept in working order and serviced and inspected appropriately:

1. extinguishing, rescue and prevention equipment;
2. devices that facilitate extinguishing and rescue work;
3. fire detection, alarm and other devices signalling the risk of an accident;
4. the lighting and signs of the exit routes;
5. the equipment and devices of the civil defence shelters (Rescue Act 379/2011, Section 12))

The owner and holder of the building and the operator must, for their part:

1. the starting of fires is to be prevented, as well as the arising of other hazardous situations;
2. the protection of persons, property and the surroundings in danger situations is to be prepared for;
3. the extinguishing of fires, and other such rescue measures that they are able to do independently, are to be prepared for;
4. start action for securing safe exit from fires and other danger situations, as well as action for

making rescue operations easier. (Rescue Act 379/2011, Section 14))

2 Basic property information

2.1 Basic information

Property name	Kiinteistö Oy Espoon Jousenkaari 7
Building address	Jousenkaari 7 02120 ESPOO
Number of apartments	48
Building type	Apartment building
Number of floors	6
Property owner	Kiinteistö Oy Espoon Jousenkaari 7

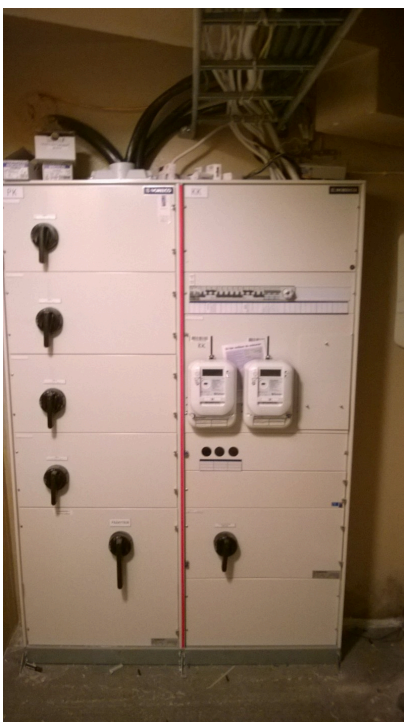
2.2 Organisation

Service manager	Nikke Mustonen SATO nikke.mustonen@sato.fi
Customer service	Asiakaspalvelu SATO phone 020 334443 asiakaspalvelu@sato.fi
Talomestari	Joonas Paatjala SATO joonas.paatiala@sato.fi

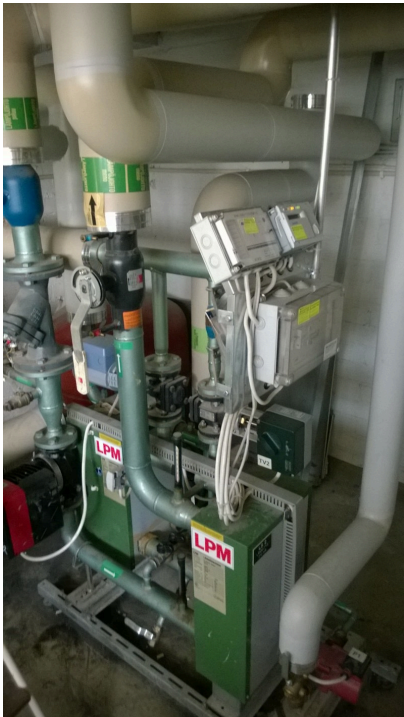
2.3 Other information

The site falls within the area of the following rescue service: Western Uusimaa.

Heating type	District heating
Main water shutoff	On the maintenance corridor
Heat distribution room	On the maintenance corridor
Electricity switchboard	At the end of the maintenance corridor
Maintenance	Matinkylän Huolto Oy / Huolto phone 09 8046 3211 service 010 524 8316
Gathering area	Parking spaces
Back-up gathering area	The neighbouring property
Number of civil defence shelters	1
Location of civil defence shelter VSS1	Bicycle store



Electricity switchboard



Heat distribution room.

3 Vastuunjako

Osapuoli	Vastuualue
Isännöinti	Vastaa koko kiinteistön isännöinnistä, huoltosopimusten ja vastaavien asioiden hallinnoinnin hoitaminen, ilmoitettuihin turvallisuus- tai muihin puutteisiin puuttuminen tai sen vastuuttaminen muulle taholle. Isännöitsijä on viranomaisvalvonnan ja muiden vastaavien asioiden yhteyshenkilö ja osallistuu mm. palotarkastuskierroksiin
Kiinteistöhuolto	Kiinteistön tekniset järjestelmät ja turvalaitteet, piha-alueen hoito, tarvittavat lumenpudotukset yms. asiat. Huoltomies havannoi kohteella liikkeessaan puutteita ja hoitaa niitä omatoimisesti kuntoon tai ilmoittaa asiasta isännöintiin.
Asukas	Asukas vastaa omasta asuinhuoneistostaan ja varastokopistaan sekä omasta irtaimistostaan ja toiminnastaan yhtiössä. Asukkaiden tiloissa olevat, kiinteistön järjestelmät tai kiinteät rakenteet, hoitaa huoltoyhtiö
Normaali tiedonkulku puutteiden osalta: Asukas--- Huoltoyhtiö --- Isännöinti	

Asukkaat voivat ilmoittaa turvallisuushuomioista tai muista puutteista huoltoon tai isännöintiin puhelimitse tai sähköpostilla, tarvittavat yhteystiedot löytyvät esimerkiksi tämän suunnitelman "Organisaatio"-luvusta.

4 Important phone numbers

4.1 Important numbers of the property

Task	Name	Telephone number	Service phone number
Maintenance company	Matinkylän Huolto Oy / Huolto	09 8046 3211	010 524 8316
Lift maintenance	KONE Hissit Oy (2)		0800 15063

4.2 Other important numbers

Operator	Telephone number	Duty hours
Public emergency numbers	112	24 h
Poison information centre	0800 147 111	24 h

5 Vaaratilanteet ja niiden vaikutukset

Vaaralla tarkoitetaan tekijää tai olosuhdetta, joka voi aiheuttaa haittaa tai saada aikaan haitallisen tapahtuman.

Riski on uhkaan liittyvä vahingon todennäköisyyden ja vakavuuden yhteisvaikutus.

Riski ja todennäköisyys	Syitä riskin toteutumiseen	Seuraus
Tulipalo (mahdollinen)	Avotuli, kynttilät, tupakointi, sähkölaitteet, sähkökeskukset ja -asennukset, ajoneuvot, tulityöt, ruoan valmistus, tuhopoltto	Henkilö- ja omaisuusvahingot
Vahingonteot, ilkivalta, varkaus (epätodennäköinen)	Puutteellinen valaistus, auki jäänyt ulko-ovi tai yleisten tilojen ovi, avataan ovi tuntemattomalle henkilölle	Omaisuusvahingot
Tapaturma (mahdollinen)	Talvisin liukkaus, lumen tai jään putoaminen katolta, kaatuminen	Henkilövahingot
Vesivahinko (mahdollinen)	Puutteet huollossa/ valvonnassa, jäätyminen, tukokset, laitteiden vikaantuminen, myrsky	Omaisuusvahingot
Kaasuvaara (epätodennäköinen)	Lähialueen vaarallisten aineiden kuljetukset, tulipalo lähialueella	Sisälle suojautuminen
Sähkökatkos (mahdollinen)	Salama, myrsky, laiteviat	Laitteiden rikkoutuminen
Liikenneonnettomuus (mahdollinen)	Lähialueen liikenne, liikenne piha-alueella	Henkilövahingot
Säteilyvaara (epätodennäköinen)	Säteilyonnettomuus	Suojautuminen sisätiloihin

6 Safety procedures

6.1 Safety equipment

Smoke extraction

The purpose of smoke ventilation is to remove fire gases, smoke and heat from the premises. The smoke ventilation equipment must be maintained and tested regularly according to the user maintenance instructions. The smoke ventilation equipment may only be used by the rescue services.

Smoke removal machine

Location of smoke extraction hatches	Smoke extraction hatch on the top floor of the staircase
Location of centre	Electricity switchboard
Smoke removal activation	In connection with the entrance



Manual smoke extraction activation



Smoke extraction hatch



Smoke extraction panel

6.2 Fire safety

Smoke detector

The purpose of fire alarms is to alert of any imminent fire. This will enable measures to extinguish the fire, warn others and take rescue measures.

Smoke detector

Location	Stairway
Coverage	Stairway
System model	Battery-operated
Type of alarm	Localised alarm

Emergency exit routes

The principle of exit safety is that all spaces of the building must have at least two exit routes at all times, which do not require keys or other tools to open the doors. Exiting must also be possible to do in the dark, which is why the exit routes must be clear at all times. Because the property has 6 floors, the window or apartment- specific balcony shall serve as an emergency exit. In this event, the rescue department shall assist in evacuating the building in case of emergency. Objects are not to be stored in front of the exits. (Environment Ministry's regulation of fire safety of buildings.)

Exit ways and doors leading to them must be easily accessible and openable in emergency situations from the inside.

A door can be locked, for example, to prevent trespassing from the outside, but must it must be possible to open it from the inside without a key during the normal use of the building.

Never exit into a smoky stairway.

7 Other arrangements

7.1 Lift

Lift

Location	Stairway
Maintenance company	KONE Hissit Oy (2)

7.2 Waste disposal

Waste disposal

Location	The refuse containers along Jousenkaari
----------	---

8 Action guidelines

The following pages contain a guide on accident prevention and on how to act in accident and danger situations. **Read the action guide carefully!**

The correct actions, solutions, and choices prevent and limit accidents. This way accidents can be minimised or they can be prevented altogether.

Safety and security are our shared concern!

8.1 Alerting help

In all urgent emergency situations, whether it be a police, fire department, paramedic, or a social worker case involving an urgent need for help CALL THE EMERGENCY NUMBER: **112**

Call the emergency number yourself if you can

It is important to make the emergency call yourself, if the matter concerns you. The victim has more knowledge on the situation, based on which the dispatcher can send help accordingly. Using middle-men to make the call can delay getting the right kind of help on site.

Tell what happened

The emergency centre dispatcher will ask the caller about what happened so that they can send the appropriate assistance.

Give the exact address and municipality

The emergency centre might have several same addresses in different municipalities/cities in its service area. Therefore it is also important to know the name of the town/city/municipality where the accident has taken place.

Answer the questions that are asked of you

The questions asked by the dispatcher are important. They do not delay alarming for help. In urgent cases the dispatcher already alerts the authorities and other partners during the call, and gives them more information on what has happened.

Act according to the information given to you

The dispatcher is trained to give instructions in various types of situations. It is important to follow the given instructions. Correct initial actions often play an important role in the end result.

End the call only after you're given permission to do so.

Ending the call too soon may delay the help from arriving. After you are given the permission to end the call, end it. Keep the phone line open. The dispatcher or the help on its way may need additional information on what has happened.

8.2 Sudden illness or accident

Find out what happened

- Has the person fallen or fainted?
- Are there possibly eye witnesses, that can tell you better about what has happened?

Check the person's condition

- Can you wake the person up by talking or shaking?

Check breathing

- If the person doesn't wake up, check breathing: place the back of your hand in front of the patient's mouth and feel if there is air flow.

Make an emergency call.

- Call the number **112**.
- Tell where you are calling from.
- Tell what happened
- Act according to directions.

Give first aid if needed.

- If the person is not breathing, start with first aid.

Turn an unconscious but breathing patient into the recovery position on their side.

Observe the patient.

- If there are changes in the patient's condition before the rescue department arrives, notify them by calling the emergency number **112**, so that the emergency centre can re-evaluate your situation.

Guide the professional help quickly to the patient

- Tell the professional help what has happened and what has been done.

8.3 Fire

Save

- Make an assessment of the situation. Rescue those in immediate danger.
- Be careful not to breathe smoke! Smoke is highly toxic and you can lose consciousness quickly if you breathe it.

Warn

- Warn others in the building about the fire and the threatening danger.
- Direct people to the gathering area.

Alert

- Call the emergency number **112** from a safe location.
- Tell who you are, where the fire is (address and floor), what is on fire, and if there are people

in danger.

- Do not hang up the phone until you are given permission to do so.

Extinguish

- Perform initial extinguishing measures, where possible.
- A grease fire is extinguished by suffocating it with a fire blanket.
- When an electrical appliance is on fire, disconnect power and begin extinguishing the fire.

Limit

- Remove fire sensitive items and flammable liquids.
- Contain the spread of fire and smoke by closing windows and the door as you exit.

Guide

- Direct the rescue personnel to the location or arrange guidance. For example: one person stays to guide on the side of the parking lot and another next to the building.

Using the lift in the event of a fire is strictly forbidden!

In evacuation situations the gathering area is: Parking spaces

Back-up gathering area: The neighbouring property

8.4 Tulipalo - toimintaohjeet, kun turvallinen poistuminen on estynyt

Joskus toisaalla riehuva tulipalo estää turvallisen poistumisen kiinteistöstä. Näissä tapauksissa on viisainta pysytellä savuttomassa tilassa ovet ja muut aukot suljettuina.

Jää asuntoon ja ole rauhallinen.

- Älä poistu porraskäytävään.
- Kerrostaloissa jokainen asunto on tehty omaksi palo-osastokseen, josta palon leviäminen toiseen asuntoon on estetty rakenteellisin toimenpitein.
- Hyppääminen korkealta johtaa kohtalokkaisiin seurauksiin, asuntoon jääminen ei.
- Mene parvekkeelle tai ikkunan luo ja herätä huomiota
 - Soita numeroon 112 ja kerro tarkka osoitteesi

Varaudu tulipalon leviämiseen.

- Laske varmuuden vuoksi vettä esimerkiksi lavuaariin.
- Jos asuntoon alkaa tulla savua ovien raoista, postiluukusta tai ilmanvaihtoventtiileistä, tuuletta raikkaalla ilmalla ja tiivistä vuotokohdat kosteilla tekstiileillä.
- Jos asunnon ovi alkaa kuumeta, jäähdytä sitä vedellä.
- Jos liekit lyövät asunnon ikkunoihin, siirrä helposti syttyvät tavarat pois ikkunoiden läheisyydestä.

Noudata viranomaisten antamia ohjeita.

8.5 Action in the gathering area

Gathering area: Parking spaces

When people have left the building and proceeded to the gathering area, one person must be appointed to take responsibility for the activities at the gathering area. Based on the situation at hand, it is necessary to consider whether it is safe to remain in the designated gathering area or if people should be directed elsewhere, for example into a pre-arranged interior area or to a property in the vicinity (the back-up gathering area).

Do not leave the gathering area without the permission of the rescue authorities.

Factors to bear in mind in the gathering area:

- taking care of any possible injured parties
- looking after people with reduced mobility or otherwise poor physical condition
- if one is aware of someone having remained inside, this is to be reported

Back-up gathering area

Back-up gathering area: The neighbouring property

In severe winter conditions or other situations, an additional gathering area may be needed. Authorities will also provide instructions about shelter locations for long-term shelter.

8.6 Assisting people with reduced mobility in emergency situations

In an emergency situation, the movement of people with reduced mobility out of the building may be difficult and slow. If you know there is a neighbour with reduced mobility, for example handicapped, blind, or elderly, try to secure their safe exit in emergency situations. If you know your neighbour is at home, but you are not able to assist in moving them out, notify the rescue authorities about the situation as fast as possible.

Work in cooperation with the other residents.

Things to consider when helping people with reduced mobility

- Help a person with reduced mobility to exit, within the limits of your own capabilities.
- Listen to the person you're helping.
- Take care of the person you helped also after getting out.

8.7 Water damage

Action guide

- Disconnect power from where the leak is and from its proximity.
- Stop the water from flowing, from i.e. the water mains, if possible.
- Notify of the situation immediately:
 - to the maintenance personnel: Matinkylän Huolto Oy / Huolto, phone 09 8046 3211, service 010 524 8316
- Contact the emergency number if needed **112**.
- Main water shutoff: On the maintenance corridor
- Heat distribution room: On the maintenance corridor
- Electricity switchboard: At the end of the maintenance corridor

Should there be threat of water outside the building

- Find out what is causing the water threat.
- If there is a leak, try to block it.
- Try to prevent the water from getting into the building.
 - by baggings
 - by using plastic covers
 - by directing the water away from the building
- Call for additional help if needed.

8.8 Under threat of violence

In an unarmed threatening situation, act in the following way.

- Act calmly and try to calm the person with your behaviour.
- Make sure you do not turn your back or let yourself be cornered, so that you will always have an escape route when a threatening person comes close.
- Call for help depending on the circumstances.
- Escape and help others escape.

Take care of your own safety. Seek to direct the threatening person to a place where they cannot harm others. After the event, contact the police about the incident if required.

If the threatening person is armed, act in the following way.

- Do not resist.
- Do whatever the person threatening you tells you to do.
- As the situation permits, try to warn others.
- By closing doors, you can limit a person's movement within the property.
- After the situation, call **112** to get professional help on site as fast as possible. Listen to directions and act accordingly.

Every threat and sighting of a possibly threatening situation must be taken seriously and the police must be informed immediately. Through your own behaviour, you can affect the progress of the situation, and thus you should take all threatening situations seriously and try to calm down already begun situations.

8.9 Public warning signal

The public warning signal is a one-minute-long ascending and descending tone or a warning announcement by the authorities. The length of the ascending tone is 7 seconds.

The public warning signal means an immediate danger threatening the public. The warning is given in population centres with an outdoor alarm system and with an alarm attached to a vehicle in rural areas.

The All Clear signal is a one-minute-long monotonous signal. It is an announcement of the threat or danger having passed.

Act in the following way after you've heard the public warning signal

- Proceed indoors.
- Stay indoors.
- Close doors, windows, ventilation holes, and air conditioning devices.
- Turn on the radio and wait for instructions.
- Avoid using the phone to prevent telephone lines from getting jammed.
- Do not leave the areas unless urged to do so by the authorities, so as not to endanger yourself on the way.

8.10 Gas hazard

Public warning signal in danger situations concerning gas

Additional information on the type of danger can be got from radio and television. The following are usually connected with a gas hazard.

- If you are indoors and can smell gas:
 - stay indoors
 - the top floors make the best shelter
 - place a wet cloth over your mouth and breathe through it
 - stay on the upper floors until the danger is over.
- If you are outside when you smell gas but are not able to get indoors:
 - hurry into side wind from underneath the gas cloud
 - try to get as high as possible, for example to the top of a hill
 - press a wet cloth, tuft of grass, turf, or moss in front of your mouth and breathe through it.

Additional information on taking cover from gas

- Switch off air conditioning devices and close doors and windows tightly. The more airtight you can make the building, the slower the gas can get inside.
- You can also close or tape inside doors and stay in upwind areas. If you smell gas you can breathe through a moist and spongy cloth.
- The authorities will announce on radio or with vehicles with loudspeakers when the gas cloud has dispersed. Ventilate indoors well after the event.

8.11 Radiation hazard

Radiation situations are monitored with gauges throughout the country. Even the slightest change is detected immediately and notified of. A public warning signal is given upon the threat of radiation.

Go inside

Close doors, windows, ventilation holes, and air conditioning tightly to prevent radioactive substances from getting indoors. The centre of the building is the best place to take shelter.

Iodine tablets

Take an iodine tablet only when the authorities tell you to do so either on the radio or on television. Iodine tablets prevent radioactive iodine from building up in the thyroid gland, but offers no other protection. You should not go outside the facilities to look for iodine tablets when the danger situation is present. You can acquire iodine beforehand from the pharmacy. Each property should have 2 iodine tablets per person.

Protect your food and drinking water

Put the food products that are out into plastic bags or tight containers. The refrigerator, freezer, and tight packages protect against radioactive dust.

Moving outside

If you must go outside, use tight clothing that covers the skin, for example rain gear. Upon coming back inside, take off your clothes in the entry hall and wash up well. Use a respiratory mask, towel, or paper towel to prevent radioactive particles from getting to your lungs.

Additional instructions

You will get additional information from your city's rescue authorities, from broadcast media, and from Yle's (the Finnish Broadcasting Company's) Teletext page 867. You can also find information from the Finnish Radiation and Nuclear Safety Authority's website www.stuk.fi and from the rescue authorities website www.pelastustoimi.fi.

8.12 Blackouts

How to act during a power cut:

- First check the fuses. If they are intact, find out whether the electricity of your neighbour or neighbouring houses is working.
- If the electricity is out from a larger area, the problem is already known and actions to fix it have started. Most electricity suppliers have a taped recording of the malfunction on its fault service number, which will give information on the blackout situation in your area.
- When the electricity comes back but acts unusually, for example the lights burn brighter or dimmer than usual, the reason might be a break in the electricity network's neutral wire. This can result in equipment damage, fire and, in the worst case, the risk of electric shock. In such situations, switch off the electricity from the main switch and call your electricity supplier's fault emergency number.
- When a power cut lasts longer, prepare yourself with warm clothes, especially in the winter, and home storage supplies. Instructions regarding home storage supplies can be found in the appendices.

In the event of a power cut, lifts will stop working. Should you be stuck on a lift due to a power cut or other failure, act as follows:

Contact the lift maintenance emergency line:

- by mobile phone - (KONE Hissit Oy (2), 0800 15063)

When necessary, you can call the general emergency number 112.

9 Civil defence

The purpose of the civil defence shelter is to protect people from collapses, explosion pressure waves and fragments, gases, radiation and fire. This property has a civil defence shelter. It is recommended that a civil defence shelter have an elected manager and deputy. It is good for the property's shelter's manager to learn how to use the equipment and how to prepare the shelter for use.

In Finland there are enough civil defence shelters for approximately 3.8 million people. Civil defence shelters are found both in domestic and other properties. In addition to shelters in properties, there are also public ones, such as rock shelters. Such civil defence shelters are public, usually the responsibility of the cities and only located in major cities.

Under normal circumstances the shelters are used for various activities, such as sports or storage, or other kinds of useful purposes. A civil defence shelter must however be ready for use within 72 hours should the authorities give an order to prepare it.

With civil defence shelters it is important to protect metal parts from rusting, insulation staying intact, machinery remaining functional, and equipment kept safe in stock.

This property has a civil defence shelter:

Location	Protection grade	Location of equipment
Bicycle store	shrapnel shelter	Heat distribution room.

The civil defence shelter is in class shrapnel shelter. The protection class M 54 (shrapnel shelter) civil defence shelter has been built in the latter half of the 1950s, with the primary purpose of providing protection against shrapnel in the event of bombing. Its drawback is the lack of its own air intake machinery, so the shelter is only suitable for very short-term use.

The authorities provide instructions by radio if it is necessary to move to civil defence shelters and information on which of the public shelters people are to move to. Moving into the civil defence shelters therefore always happens as a result of direction by the authorities. Accidents occurring in normal times do not generally ever require taking cover in civil defence shelters, with taking cover indoors being sufficient. There are 110,000 spaces altogether in the civil defence shelters of Finland.

9.1 Civil defence shelter maintenance.

A civil defence shelter as well as civil defence equipment and devices must be maintained in such condition that the shelter can be made operational in 72 hours. A shelter can also be used for other purposes, as long as making it operational takes no longer than stated before. Normal time use is not allowed to damage the shelter nor prevent it being inspected or tested for leakage.

It is not permitted to store pollutant liquids in a shelter nor is it permitted to make holes in surrounding structures. Protective doors, hatches and air ventilation machinery must not be moved from their designated spots nor is it permitted to use the air ventilation machinery for air ventilation under normal circumstances. It is permitted to install a door to the protective door's opening. Even during normal times it should be ensured that at least half of the shelter is free in case of a sudden need to take shelter.

Additionally you should take note of the following:

- The civil defence shelter owner and manager must make sure that the shelter, its equipment and machinery are kept operational and maintained and inspected accordingly.
- An appointed person inspects and test uses the shelter's doors, hatches, tightness, air conditioning and electricity equipment, as well as the drains, yearly according to the directions from the equipment retailer.
- In order to ensure the shelter equipment is operational they ought to be inspected and serviced at least every 10 years unless the manufacturer has stated a shorter maintenance period.
- An inspection log must be drafted when checking machinery's functionality, where machine-specific inspections are marked. The inspection log must be presented to the rescue authorities when asked for.
- The owner and the proprietor of the property must ensure that the civil defence shelter has such equipment that it can be made operational. This equipment consist of items such as spare water containers, waste containers, dry lavatories, and beds.

9.2 Renovating the civil defence shelter

When proceeding to an improved level of protection

- A civil defence shelter is assigned a care person, who is in charge of renovation. S/He must know the machinery in the shelter as well as know how to use it. Additionally, the shelter's care person is responsible for the general order and cleanliness, as well as discipline, in the shelter.
- The shelter is emptied of the goods stored in it, or that have otherwise collected there, in accordance with the clearing plan.
- All temporary structures are taken down and taken out of the shelter.
- Hinges, latches, etc. from doors and hatches are inspected, lubricated, and serviced.

10 Säilyttäminen

Erilaisten tavaroiden säilyttämisestä voi aiheutua tulipalon syttymisen tai leviämisen vaara, turvallisen poistumisen estyminen hätätilanteessa sekä tulipalon sammuttamisen vaikeutuminen. Käsittele siksi palovaarallisia aineita aina ohjeiden mukaan. **Palovaarallisten aineiden säilyttäminen huoneistokohtaisissa varastoissa on kokonaan kielletty. Rakennuksen uloskäynnit on aina pidettävä kulkukelpoisina ja esteettöminä.**

- Asuinhuoneistot ja niihin kuuluvat parvekkeet, terassit tai vastaavat tilat
 - Asunnoissa tulee välttää tarpeettomien tavaroiden varastointia.
- Uloskäytävät, porrashuoneet, sisäiset käytävät ja varastojen kulkureitit
 - Ei saa säilyttää mitään tavaraa.
- Rakennusten alla tai läheisyydessä
 - Ei saa säilyttää helposti syttyvää materiaalia tai muuta tavaraa rakennusten seinustoilla, mm. roska-astiat, pahvipinot ja kuljetuslavat

Huom

Epäselvissä tapauksissa tulee aina ottaa yhteyttä paikallisen pelastuslaitoksen palotarkastajaan

11 Attachments

This rescue plan has the following attachments:

- How to use a small fire extinguisher
- Car heating cables
- Home storage supplies

Appendix A How to use a small fire extinguisher

The resident is responsible for acquiring extinguishing equipment for the apartment.

A.1 Extinguishers

- Turn the extinguisher upside down and shake the extinguisher to ensure the powder's running.
- Remove the safety pin.
- Approach the fire from the direction of the wind.
- If you are indoors, approach low on the floor, as this will improve the visibility.
- Take a hold of the extinguisher's hose from the end and direct the extinguishing substance at the base of the flames, don't cut through them.
- Start extinguishing from the front and continue towards the back, or from bottom to top.
- Extinguishing can be improved with a back and forth motion.
- The whole area that is burning must be covered in the extinguisher cloud.
- After the flames are extinguished the extinguishing can be stopped.
- Observe the burnt object and make sure that the fire is out.
- If the target catches fire again, repeat the extinguishing.

A.2 Extinguishing blankets

- Take a hold of the corners of the blanket and protect your hands by placing them inside the blanket.
- Step on the blanket with your foot; this will prevent the flames from getting to your face.
- If you are outside, approach the fire from the direction of the wind.
- Extend your arms straight.
- Spread the blanket over the fire.
- Hold the blanket tightly over the fire and make sure that the fire is extinguished.
- Protect yourself while lifting the blanket as the fire can re-ignite.
- Make sure once more that the fire is extinguished.

Appendix B Car heating cables

Car heating cables should be detached from the power outlet and the cable in the outlet should not be left hanging on the heating pole. The cover of the outlet box should also be kept locked.

An open outlet box and a freely hanging heating cable with voltage cause danger of an electric shock. If the plug-in unit falls into a puddle or snow, it may electrify the surrounding area. In addition, the heating cable may break and become a hazard while clearing snow in the area, for example. An open outlet box is susceptible to vandalism.

Users should be advised on the safe use and storage of the car heating cable. The housing organisation is responsible for the safety of the property, and if, for example, an external party is injured, the housing organisation will be held responsible. A car user who has incorrectly left the cable attached to the outlet is also responsible for their part for any possible damages.

When pre-heating a car, you should only use a heating cable suitable for the purpose and an interior space heater designed for cars. Using an extension cable should be avoided as extension cables are generally not child-proof and they are easily left on the ground, where they are subjected to water, dirt and snow. The connection cable and condition of the plugs should be checked at regular intervals.

If the car heating equipment is not used or their condition is not preserved, danger of an electric shock to the user or another person follows. It also poses a fire hazard.

Appendix C Home storage supplies

Home storage supplies are a part of a housing company's residents' independent protection. Surprising circumstances are easier to overcome when you have a home storage supply at home. Home storage supply means those food and other daily goods that are stocked up on more than normally needed in weekly/monthly use. The home storage supply should last for several days, even a week. The home storage supply consists of everyday groceries and items, which are stocked up on as they are used up. This way the groceries and other items stay fresh and usable.

A situation where you cannot get to the store can surprise you for many reasons. A person living alone can get sick and is not able to go shopping or a member of the family can fall sick. The wider society is vulnerable as well; there can be a strike, traffic connections may break down, or there might be a wider disturbance in the electricity grid. There can be an accident which closes the stores or prevents you from going outside. Additionally, distribution disturbances can prevent goods from getting to the stores as well as getting items from the store.

Each family has their own kind of home reserves consisting of usual groceries. The contents of the home reserves can differ based on the household's food preferences and also include containers for storing water, medicine, iodine tablets, as well as household-specific necessities. The home reserves should last at least a week, preferably two – home reserves are continuously used and restocked continuously.

The home reserves also include essential supplies, of which there must be a supply for the same period as in the case of food. These are, amongst others, personal medication, hygiene products, nappies, a battery-powered radio, an electric flashlight and batteries.